

HIGHWIRE
ELECTRIC
BLOCKS

**Innovate or
die trying.**

1717 SE 3RD AVE PORTLAND, OR





Highwire is part of the Electric Blocks—five buildings designed to inspire visionaries and free-thinkers in Portland’s Central Eastside.

**We can flex,
so you can pivot.**

Your business will grow. Wouldn't it be great if your workplace could grow with it? With five flexible workspaces within blocks of each other, you've got options to grow and pivot as your business does.

THEELECTRICBLOCKS.COM



**A revolutionary
HQ for radical
companies.**

Everything but ordinary.

Like a shining beacon calling entrepreneurs, creatives, and visionaries home, Highwire is a revolutionary addition to Portland's reborn industrial Eastside. This spacious, flowing, terraced building is for those ready to make a mark on the world. Its renewable timber-frame design means they don't have to leave a mark on the Earth while doing it.

Innovate or die trying.

Highwire is at the forefront of sustainable practices, as the largest building in our region built with mass plywood - a renewable resource strong enough to ensure this building stands for many generations.

Fun fact, Oregon grows enough trees to replace the wood used at Highwire in 29 minutes.

Lead with LEED

LEED PLATINUM

TARGETTING PATH TO NET-ZERO

60% GREEN ROOF

BIRD-SAFE GLASS

ELECTRICAL CHARGING STATIONS

MASS-PLYWOOD CONSTRUCTION





Write your own rules.

Highwire is an architectural rally cry to companies and talent who think differently and strive for positive impact.

We've teamed up with Portland artist Joe Thurston of Site-specific to create art installations and thoughtful details throughout every floor, because it's all in the details. Level up your work and your workforce in Highwire.

Beams of wood.
Walls of art.
LEEDs of Platinum.

From the fitness center to the layout of staircases, Highwire was designed to promote healthy, active lifestyles. 125,000 square feet is enough space to accommodate every bit of your company's ambition.





**This is how
Portland does
transformative.**

**Huge architectural impact,
tiny environmental impact.**

Highwire wears the crown for contemporary architecture and energy efficient design in Portland's Central East-side. Daylight pouring through expansive windows, 13-foot tall ceilings, a living green roof - this is sustainable design at its best.



Welcome to the motherhip.

We have all the amenities under one roof. A gym, bike parking, electric car charging, showers, terraces, gender-neutral restrooms, and more, all in one.

The unique glass facade of Highwire is the future of Portland's skyline and conveniently, there's an entire river separating it from what's been done before.

BUILDING HIGHLIGHTS

125,000 square feet of
Class A workspace

230 secured
parking spaces

150 secured Bike
parking spaces

Outdoor terraces on
every floor, with views
of Mt. Hood and
downtown Portland

Showers & lockers
with towel service

Highly visible signage
opportunities for
tenants

Furnished lobby
welcoming tenants
and visitors with a
community gathering
space

Highwire is part
of the Electric Blocks
- a network of five
buildings in Portland's
Central Eastside.



Highwire at the Electric Blocks is your headquarters smack dab in the center of the city's progressive tech, design, and creative scene. Come for the beautiful workspace, terraces, unmatched talent, and dynamic neighborhood. Stay for the unbeatable Portland lifestyle.

WITHIN A 10-MINUTE WALK

45+ Restaurants/bars

20+ Retail shops

10+ Coffee shops

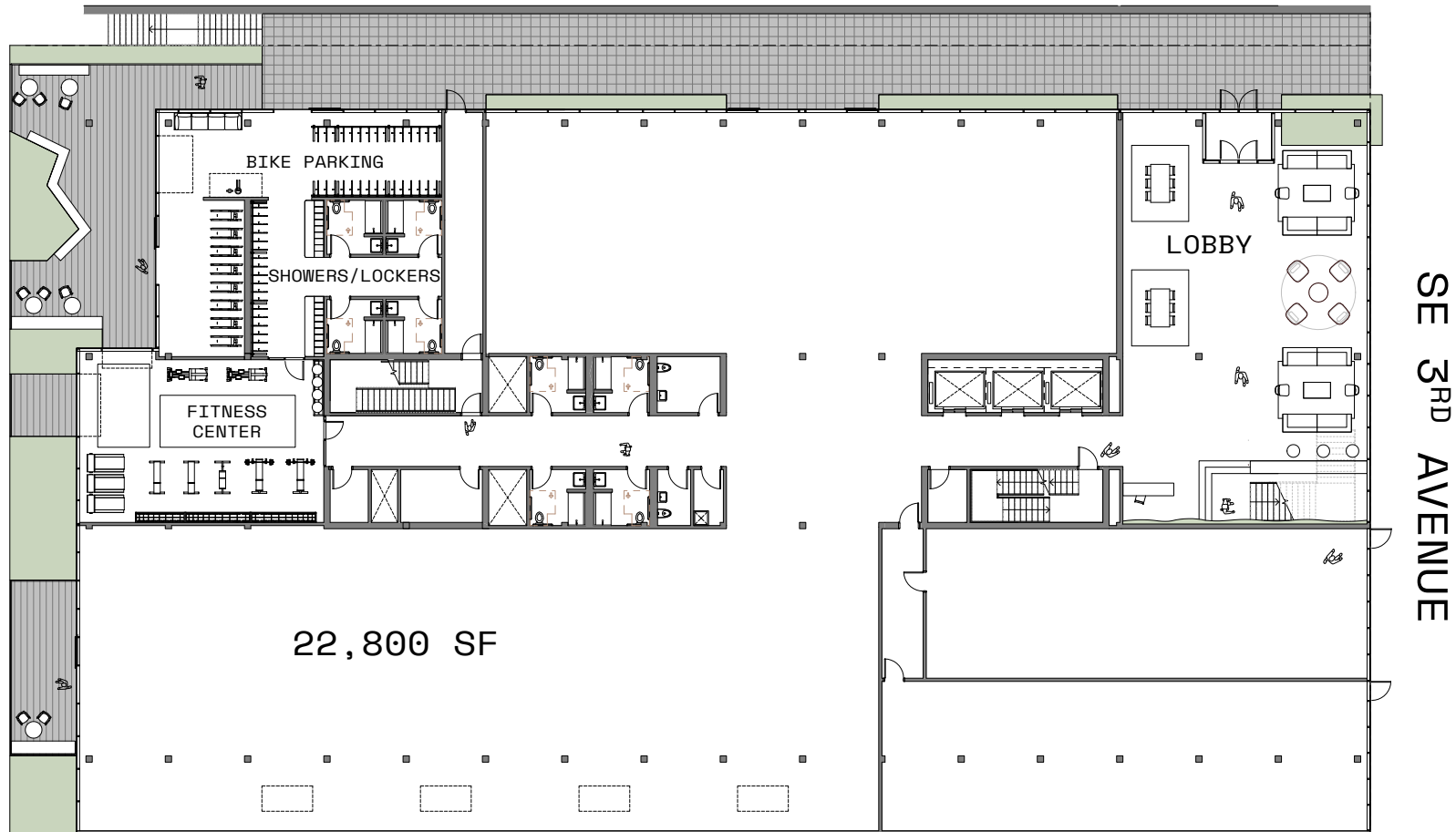
15+ Breweries

Our 350,000 square foot Central Eastside portfolio makes it easy to scale with ample expansion opportunities.

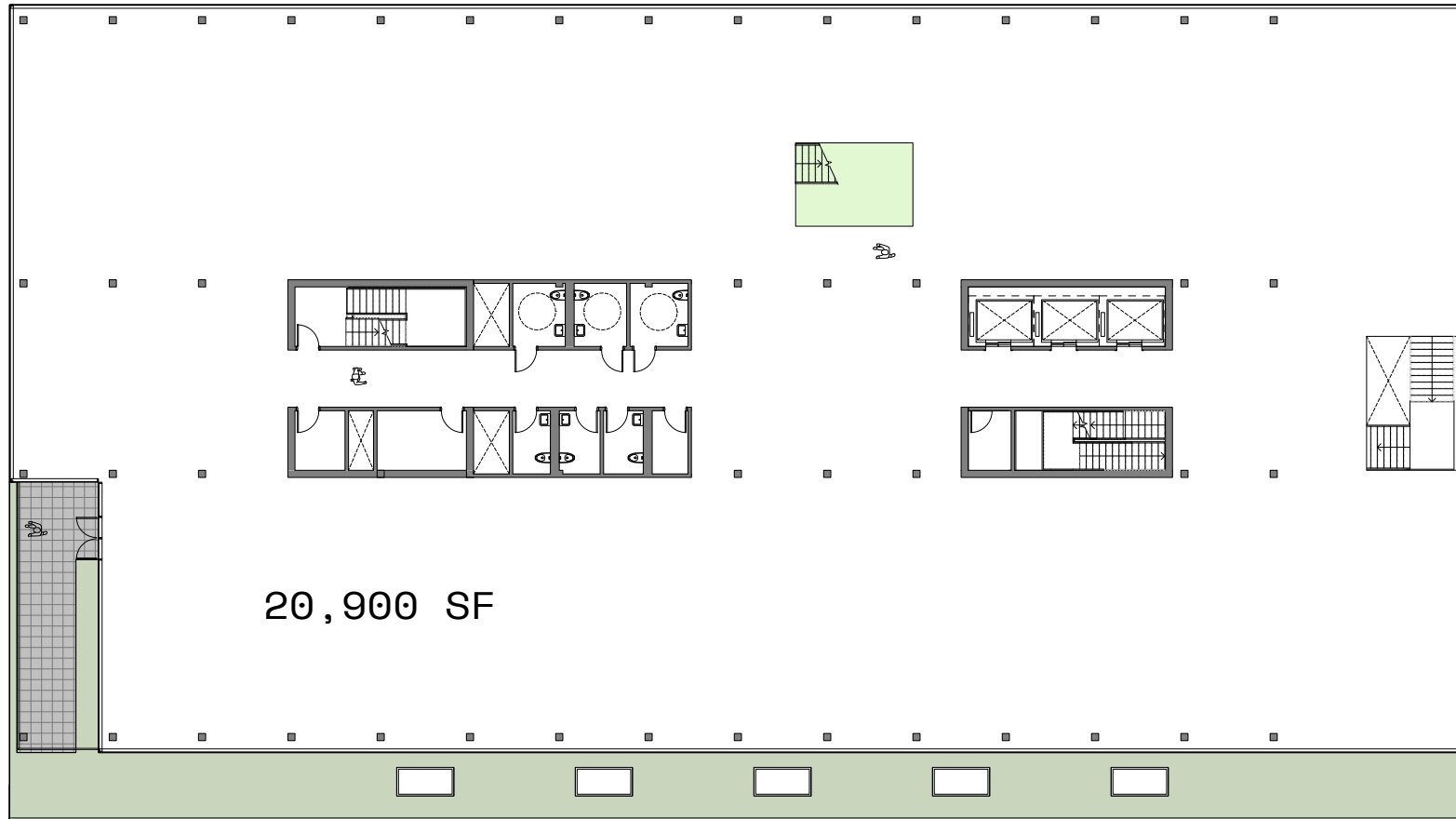
HIGHWIRE



Level One

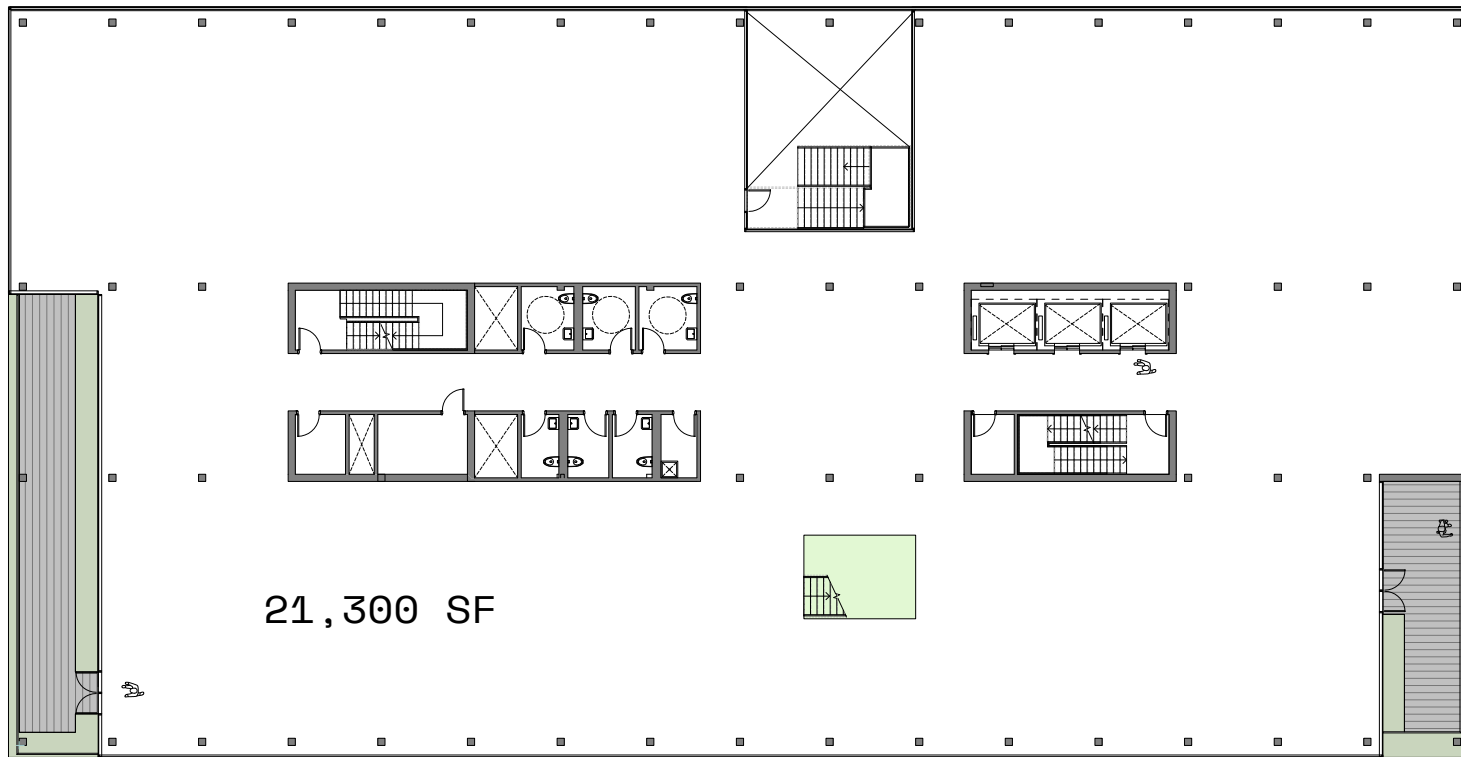


Level Two



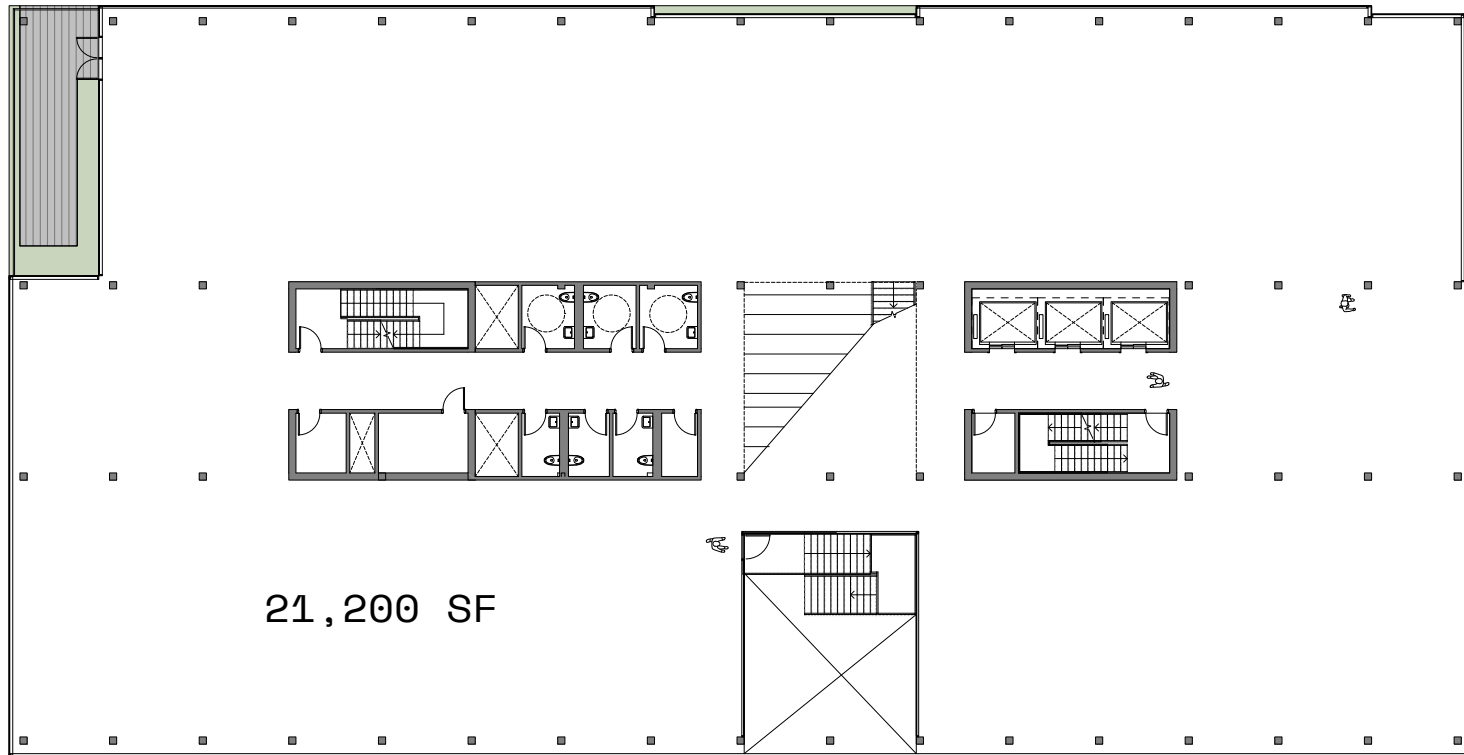
SE 3RD AVENUE

Level Three



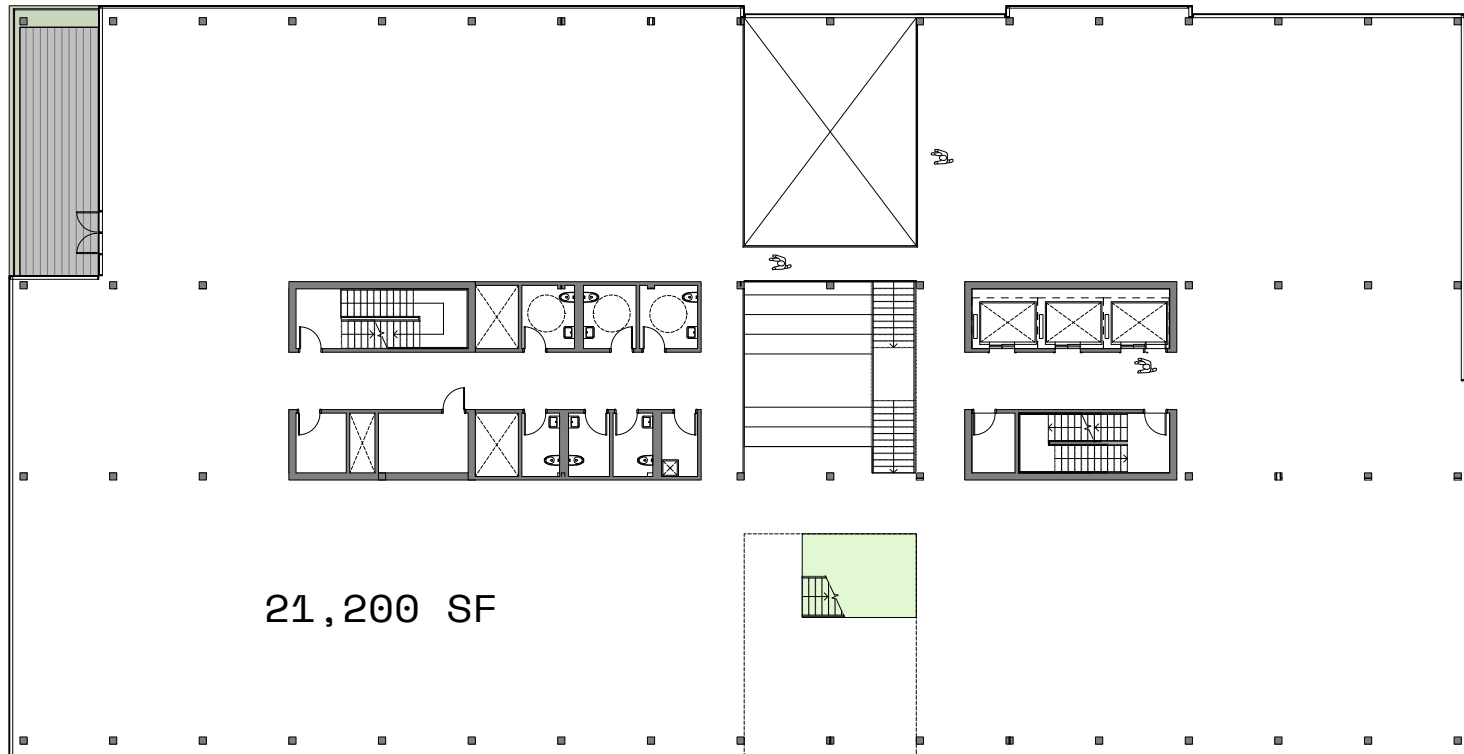
SE 3RD AVENUE

Level Four



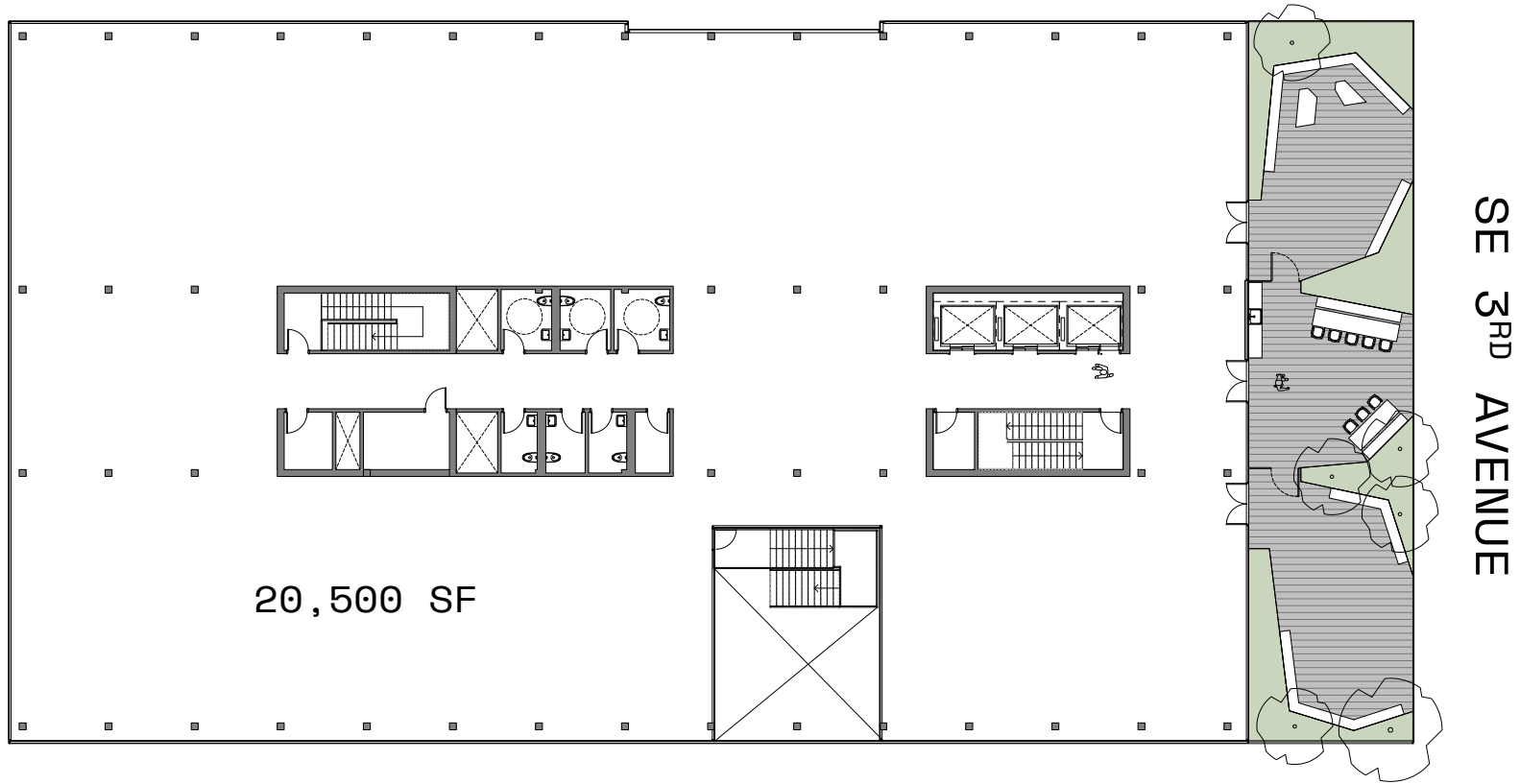
SE 3RD AVENUE

Level Five

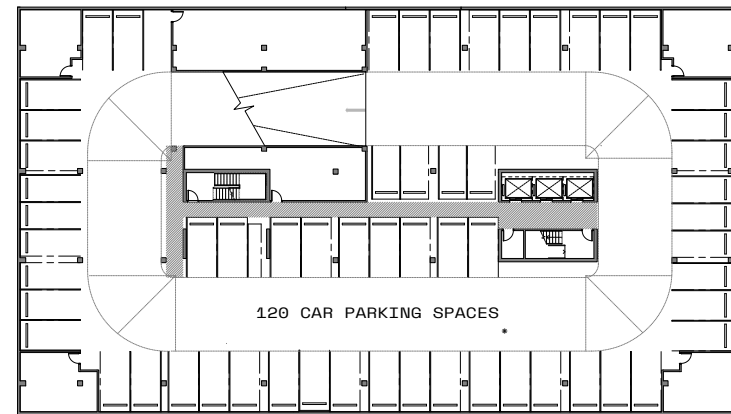
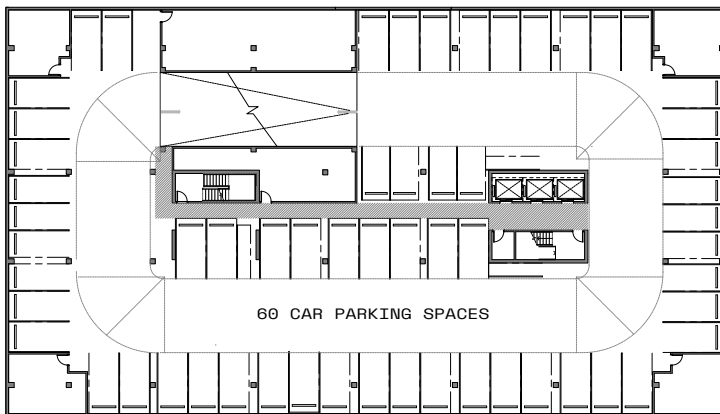
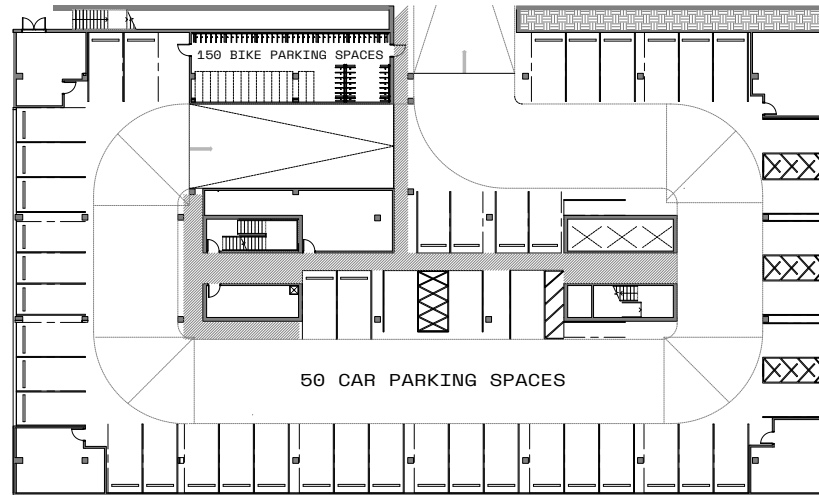


SE 3RD AVENUE

Level Six



Parking Garage



*120 MECHANICAL CAR PARKING SPACES



Start your future in Highwire at the Electric Blocks today.

[THEELECTRICBLOCKS.COM/HIGHWIRE](https://theelectricblocks.com/highwire)

For leasing information contact
Hello@killianpacific.com

Highwire

Six stories of striking design and
modern workspaces in the Central
Eastside—the deep end of
Portland's creative pool.

AVAILABILITY

Now Leasing

HIGHWIRE
ELECTRIC
BLOCKS

**Innovate or
die trying.**

1717 SE 3RD AVE PORTLAND, OR

KILLIAN PACIFIC